



# POST ROCK DISTRICT 4-H NEWSLETTER MAY 2024

## DISTRICT/STATE EVENTS AND DEADLINES AT A GLANCE

- |             |   |             |  |
|-------------|---|-------------|--|
| May 1:      | Drop/Add Projects Deadline in 4-H Online          | Jun. 15:    | Registered breeding papers in exhibitor's name     |
| May 1:      | Market Beef Nominations due & DNA postmarked      | Jun. 17-28: | Citizenship Washington Focus                       |
| May 3-5:    | Shooting Sports Instructor Training, Rock Springs | Jun. 21-22: | Insect Spectacular, Hays                           |
| May 4:      | Shutterbug Workshop at the Zoo, Garden City       | Jun. 22:    | NW Kansas 4-H Dog Conference & Show, Phillipsburg  |
| May 5:      | Discovery Days registration deadline              | Jun. 24:    | Post Rock District 4-H Dog Show registration due   |
| May 5, 12:  | 4-H Dog Project Practices, Osborne                | Jul. 8:     | Post Rock District 4-H Dog Show, Osborne           |
| May 20-22:  | Drone Engineering, Salina                         | Jul. 11-14: | Jewell County Fair, Mankato                        |
| May 22:     | Wild West Day Camp, Mankato                       | Jul. 12-13: | Dr. Bob Hines Kansas Swine Classic, Manhattan      |
| May 22:     | Livestock Showmanship Clinic, Osborne             | Jul. 15:    | Kansas State Fair Grand Drive entry deadline       |
| May 26:     | 4-H Dog Project Practices, Osborne                | Jul. 16-20: | Lincoln County Fair, Sylvan Grove                  |
| May 28:     | Outdoor Adventure Day Camp, Osborne               | Jul. 18-22: | Smith County Fair, Smith Center                    |
| Jun. 3-5:   | Champions Livestock Judging Camp 1, Manhattan     | Jul. 21:    | Post Rock District Archery Qualifier, Waconda Lake |
| Jun. 4:     | Garden to Table Day Camp, Beloit                  | Jul. 24-27: | Mitchell County Fair, Beloit                       |
| Jun. 5:     | Last day to order Small Livestock DNA Envelopes   | Jul. 24-27: | Osborne County Fair, Osborne                       |
| Jun. 5-7:   | Discovery Days, Manhattan                         | Aug. 10:    | State Horticulture Judging Contest, Manhattan      |
| Jun. 5-8:   | Animal Science Leadership Academy, Manhattan      | Aug. 12:    | Wheat Expo, Manhattan                              |
| Jun. 10-12: | Champions Livestock Judging Camp 2, Manhattan     | Aug. 15:    | Kansas Junior Livestock Show entry deadline        |
| Jun. 11-14: | Plant Science Range Camp, Murdock, KS             | Aug. 17-18: | Livestock Sweepstakes, Manhattan                   |
| Jun. 13:    | KSU Horse Judging Advanced Camp, Manhattan        | Sep. 6-8:   | Kansas State Fair Grand Drive                      |
| Jun. 14-16: | Geology Field Trip, Northwest Kansas              | Sep. 12-14: | Kansas State Fair 4-H Horse Show                   |
| Jun. 15:    | Small Livestock Nomination due & DNA postmarked   | Sep. 26:    | Beef Stocker Field Day, Manhattan                  |
| Jun. 15:    | Commercial Heifer Nominations due                 | Sep. 27-29: | Kansas Junior Livestock Show, Hutchinson           |

### KANSAS 4-H MASTER CALENDAR

Kansas 4-H has a state and regional events master calendar. It is a living document with regular additions. Access the latest version at [www.kansas4-h.org/events-activities/](http://www.kansas4-h.org/events-activities/).



Post Rock 4-H



Kansas 4-H



4-H Online



**Nora Rhoades**  
Youth Development Agent  
nrhoades@ksu.edu



**Tonia Underwood**  
4-H Program Coordinator  
tiunderw@ksu.edu



**Kim Naber**  
4-H Program Coordinator  
kimn@ksu.edu



**Risa Overmiller**  
4-H Program Coordinator  
overmiller@ksu.edu



# JEWELL COUNTY 4-H

## POST ROCK DISTRICT NEWSLETTER

Tonia Underwood, 4-H Program Coordinator  
(785) 378-3174 tiunderw@ksu.edu



### Add/Drop Projects by May 1

The deadline to add/drop projects in 4-H Online is May 1! You can only take exhibits to fair in projects you are enrolled in! Call the office if you need help.



### Jewell County Fair: July 11-14

Pre-Fair Entry Deadline: June 20

Pre-Fair Judging: July 9



### 2024 Fair Superintendents

Adult superintendents and youth assistants are needed to help with Jewell County Fair. Please sign-up for the department you are willing to help with at this link:

<https://www.signupgenius.com/go/10C0E4FACAD29A0FBC07-jewell/>



### Jewell County Fair Information

July will be here before we know it! As we get closer to the fair, don't forget that there will be lots of information to help you prepare on the Post Rock District website. You will be able to access the Fair Book, Schedule, Livestock Forms, Fashion Revue Forms, and more at:

<https://www.postrock.k-state.edu/4-h/county-fairs/jewellfair/index.html>



### 2024 4-H Food Stand Sign-Up

The fundraiser for Jewell County 4-H activities is our fair food stand! Each family is required to work one shift which includes at least 1 adult and all 4-H members. The link to sign-up for the 2024 Food Stand is:

<https://www.signupgenius.com/go/10C0E4FACAD29A0FBC07-49284035-2024>



### Jewell County Senior - Abbey Schleifer



"You can't wait until life isn't hard anymore before you decide to be happy." -Nightbirde

"I am grateful for 4-H for teaching me valuable lifelong skills."



### 4-H Event Scholarships

Jewell County active 4-H members can get a scholarship to attend a 4-H camp, conference, or other event. This scholarship will pay for 50% of the base price of the activity/event you are applying for. This scholarship is for one activity/event per year, per 4-H member. Remember to fill out the application and turn it into the extension office before you register. Applications are online at [www.postrock.k-state.edu/4-h/awards-and-recognition/event-scholarships/](http://www.postrock.k-state.edu/4-h/awards-and-recognition/event-scholarships/).

### Wild West Day Camp in Jewell County

Jewell County 4-H Council is hosting a Day Camp on May, 22 from 8:00 a.m. to Noon. It will be for ALL youth entering Pre-K to 3rd grade in the fall, so let your friends know! Details are on page 2. Register by May 14 at [bit.ly/WildWestDayCamp](http://bit.ly/WildWestDayCamp). Come learn and have fun with our Jewell County 4-H teen leaders!

### 4-H Council Meeting

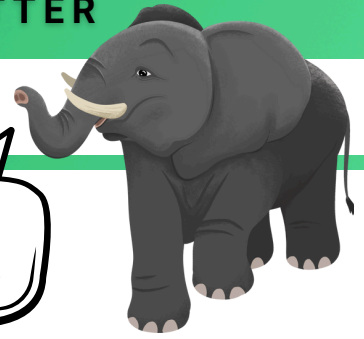
Jewell County 4-H Council will meet Tuesday, May 14 at the Mankato Courthouse starting at 7:00 p.m.



# LINCOLN COUNTY 4-H

## POST ROCK DISTRICT NEWSLETTER

Tonia Underwood, 4-H Program Coordinator  
(785) 524-4432 tiunderw@ksu.edu



Fair week is  
July 15 - 20!

### **FAIR** County Fair Safari ~ It's a Jungle Out There!

**Purchase Livestock Tags:** 4-H tags are needed for 4-H/FFA livestock. As soon as you own your animal, please get it tagged. Pickup and pay for your tag at the Extension Office for beef, bucket calf, sheep, swine, and goats.

**Judges Assistant Sign-up:** Take some time to sign up to help with a project area at the county fair. We need judge's assistants. Adults and responsible youth should sign up. Generally, this role involves assisting the judge with paperwork while they complete consultation judging, placing ribbons, and arranging the public display. It takes many volunteers to have a successful fair, and we appreciate each 4-H family signing up for at least one area.

Sign-up online to help by following the QR code or visiting



<https://bit.ly/2024LCFJudgingAssistantSignUp>

**Project Sign-up Due May 1:** Youth MUST be registered in 4-H Online for any project they want to exhibit in the 4-H/FFA division of the county fair by May 1. Email Tonia at tiunderw@ksu.edu and she can assist with changes!

**Pre-Fair Entry Deadline is July 1:** Mark your calendars for July 1! This is the deadline to pre-register for county fair entries at the Extension Office.

**Fair Schedule and Fair Book:** We are working diligently to finalize the fair schedule, fair book and other forms. In the first part of May, we'll get them on the Lincoln County Fair 4-H website at [www.postrock.k-state.edu/4-h/county-fairs/lincolnfair/](http://www.postrock.k-state.edu/4-h/county-fairs/lincolnfair/).

### 4-H EVENT SCHOLARSHIPS



#### Janice Rahmeier Tucker Memorial Scholarships:

The 4-H Boosters, with support from the family, have expanded the memorial fund's use to provide \$50 toward the registration cost of a 4-H regional, state, or national camp/conference. There is no application to receive this gift; however, an active member may only receive it once per program year. Contact the Lincoln Extension Office if you are planning to register for an event, and we can assist with determining how to apply the award to registration fees due.

**Booster Event Scholarships:** The 4-H Boosters offer scholarships which cover half of the registration expense to attend a state 4-H event. Youth must apply every year by October 1 to be eligible. Winners are announced at the Achievement Celebration.

**Self-Determined Scholarships:** The 4-H Boosters offer these scholarships with the purpose of supporting clubs and/or individuals throughout educational and project learning experiences. Scholarships are considered on a case-by-case basis when applications are submitted.



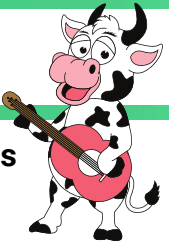
We wish Sydney, Wayne, Maddie, and Bethany the very best as you celebrate your high school graduations! Thank you for your many contributions to 4-H over the years!



# MITCHELL COUNTY 4-H

## POST ROCK DISTRICT NEWSLETTER

Tonia Underwood, 4-H Program Coordinator  
(785) 738-3597 tiunderw@ksu.edu



### Congratulations Class of 2024

Congratulations to our Mitchell County 4-H Class of 2024 graduates - Morgan Weston and Jacob Winkler. Best wishes as you take the next steps towards achieving your dreams!

### Senior 4-H Scholarships Due May 1

Graduating seniors are eligible to apply for multiple 4-H scholarships! Find the applications at the Post Rock District 4-H > Awards and Recognition > [Education Scholarship website](#).

### Project Add/Drop Deadline is May 1



Deadline for enrolling in projects in 4-H Online is May 1. You can only take exhibits to fair in projects you are enrolled in! Email Tonia if you need to change projects or call the Extension Office.

### 4-H Council Meeting



Mitchell County 4-H Council will meet at Great Plains R&D Meeting Room in Tipton on Monday, May 20 at 7:00 p.m.

### From Garden to the Table Day Camp

Mitchell County 4-H is hosting a Day Camp on June 4 from 8:00 a.m. to Noon. It will be for ALL youth entering Pre-K to 3rd grades in the fall, so let your friends know! Details are on Page 2. Register by May 16 at <https://bit.ly/GardenToTableDayCamp>. Come learn and have fun with our Mitchell County 4-H teen leaders!

### Tonia's Office Hours

Tonia plans to be in the Beloit Office on most Tuesdays or by appointment! If you need something, please call or email!



# FAIR

## Dancing With The Steers

July 24- 27, 2024



- Pre-Fair Entry Deadline: July 8
- Foods and Visual Arts Judging: July 22, morning
- Sewing and Textile Design and Shopping in Style (previously called construction and buymanship) Judging: July 22, afternoon
- Public Fashion Revue: July 26
- Fair will begin one day earlier than last year. The beef show will be on Wednesday, July 24.
- The full schedule is being finalized, and we'll send an email out when it is complete!



### Mitchell County Fair Food Stand Donations

Here is the Mitchell County Fair Food Stand Donations sign-up:

<https://www.signupgenius.com/go/10C0E4FACAD29A0FBC07-49253509-2024>



### 2024 4-H Food Stand Shift Sign-Up

The fundraiser for Mitchell County 4-H activities is our fair food stand! Each family is required to work one shift which includes at least one adult and all 4-H members. The link to sign-up for the 2024 Food Stand is :

<https://www.signupgenius.com/go/10C0E4FACAD29A0FBC07-49346066-mitchell>



### 4-H Fair Superintendents and Youth Assistants

Adult superintendents and youth assistants are needed to help with the Mitchell County Fair and will receive credit at the food stand. Please sign-up for the department you are willing to help with at this link:



<https://www.signupgenius.com/go/10C0E4FACAD29A0FBC07-49256189-fair>



# OSBORNE COUNTY 4-H

## POST ROCK DISTRICT NEWSLETTER

Kim Naber, 4-H Program Coordinator  
(785) 346-2521 kimn@ksu.edu



### 4-H COUNCIL SPONSORED

#### OUTDOOR ADVENTURE DAY CAMP

Find more info on page 2 of District News



Tuesday, **May 28th** | 8:00 a.m. | Osborne Scout Cabin



### CONGRATULATIONS CLASS OF 2024

Congratulations to the following Osborne County Class of 2024 graduates - Riley Cameron, Nathan Goheen and Mya Schweitzer! We are proud of all your accomplishments and your contributions to Osborne County 4-H. Best wishes as you take the next steps towards achieving your dreams!

### 4-H FOOD STAND SIGN-UP



The fundraiser for Osborne County 4-H activities is our fair Food Stand. Each family is required to work one shift. An email with the link to sign-up for Food Stand shifts will be sent out **Friday, May 31st at 9:00 a.m.** Attached with the newsletter is the 2024 4-H Event Schedule to review before selecting shifts.



### SAVE THE DATE - TACO PREP MAY 20TH

Please help us prep taco meat for the fair Food Stand. We will be preparing 150 pounds of ground beef on **Monday, May 20th**. The first shift will start at 4:00 p.m. with browning the ground beef followed by another shift at 5:30 p.m. We will be using the Osborne High School FACS room kitchen.

### VISITING THE OSBORNE OFFICE

The Office Professional position in Osborne is still vacant. Please call ahead if you need to visit the office.

### FOLLOW POST ROCK 4-H INSIDER EXPERIENCE FACEBOOK PAGE AND CHECK FAMILY EMAIL

We will be sharing a lot of information regarding work days, t-shirt orders, Food Stand Sign-up and other important news through your email and the Post Rock 4-H Insider Experience. Make sure you are checking for important notices for Osborne County 4-H families!

### OSBORNE COUNTY 4-H COUNCIL NEWS

#### Upcoming 4-H Council Meeting

June 3 | 7:00 p.m. | Osborne Extension Office

Osborne County 4-H Council had a busy April meeting. Council members voted to purchase metal signs for fair ground buildings and discussed other project displays.

### 2024 OSBORNE COUNTY FAIR INFO

**July 24 - 27, 2024**

Fair Theme - **DANCING WITH THE STEERS**

Deadline for animal and project ownership and Fair Entry registration is **July 8th**.

The schedule for the 2024 Osborne County Fair 4-H events and a draft of the 4-H/FFA division fair book can be found on the Post Rock District website. Here is the link to the fairbook: [www.postrock.k-state.edu/4-h/country-fairs/osbornefair/](http://www.postrock.k-state.edu/4-h/country-fairs/osbornefair/)

### CHANGES TO 2024 OSBORNE COUNTY FAIR 4-H EVENT SCHEDULE

*Please note these changes that were recently made to several 4-H events.*

- Post Rock District 4-H and Osborne County Open Dog Show will be **Monday, July 8th at 9:00 a.m.** at Covered Arena.
- The 4-H and Open Class Pet Show has been moved to **Friday, July 26th at 1:00 p.m.**

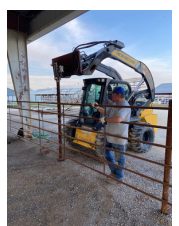


### FAIR T-SHIRT ONLINE ORDERS

Council voted to have a 2024 fair t-shirt. More information to come soon.

### WATCH FOR UPCOMING WORK DAYS

Thanks to the Osborne County Fair Board for initiating the Covered Arena continuous fencing project! Council voted to purchase paint and supplies. We will be planning some work days in the next several weeks.





# SMITH COUNTY 4-H

## POST ROCK DISTRICT NEWSLETTER

Risa Overmiller, 4-H Program Coordinator  
(785) 282-6823      overmiller@ksu.edu

### Fair Junior Leaders and Ribbon Handlers

Any 4-Her 12 and older can sign up to be a junior leader in any project area at the fair. They will need to be there at judging to help the superintendent and the judge.



Any 4-Her can be a ribbon handler for a project area. They will need to be there during and after judging to help handout or put ribbons on projects. Please email Risa to let her know what project area you can help in and what job you would like to have.

### THANK YOU!

Thank you to all the 4-Hers and parents who have come to help with the SunPorch Activities. The residents really enjoy having us. May 12-17 is Nursing Home Week – Let me know if you can think of something great to do for the residents.

### Important Dates:

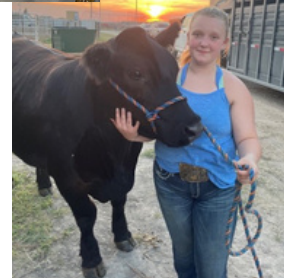
- May 1 - Project Drop/Add Deadline in 4-H Online
- June 23 - Smith County 4-H Council, 2:00 p.m.
- July 1 - All Animals need to be tagged
- July 1 - Pre-fair entry deadline, forms due to the office
- July 12 - 4-H Foods Judging
- July 15 - 4-H Sewing & Textiles and Fashion Judging
- July 16 - 4-H and Open Cats and Hand Pets Judging
- July 18-22 - Smith Co. Free Fair - Wild About the Fair

**\*\*\*\* Please check your email for a list of projects your child is enrolled in and update as needed. If you need help contact the Extension Office at 785-282-6823 by May 1st!**

### Congratulations Seniors!!

Oh! The Places You Will Go!

We are so proud of you and know each of you will go and do great things! Congratulations on finishing this stage in life and moving into the next big adventure: Ean Doane, Sierra Kingsbury, Nathan Schlatter, and Kaden Weltmer!



**POST ROCK DISTRICT**  
*Showmanship Clinic*

Wednesday  
May 22, 2024

5 to 7 pm  
Check-in at 4:45

**Osborne County Fairgrounds**

Have questions? Contact our Livestock Agent, Blaire Todd  
at (785) 738-3597

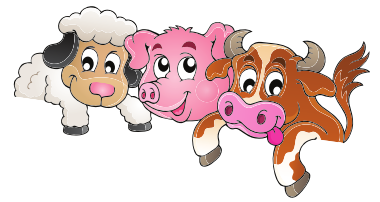
**K-STATE** Research and Extension | Post Rock District

Kansas State University Agriculture Experiment Station and Cooperative Extension Service  
K-State Research and Extension is an equal opportunity provider and employer.

# POST ROCK DISTRICT 4-H NEWSLETTER

## STATE AND DISTRICT NEWS

### LIVESTOCK SHOWMANSHIP CLINIC



Post Rock District Showmanship Clinic is on Wednesday, May 22 from 5:00 to 7:00 p.m. at the Osborne County Fairgrounds. Check-in is at 4:45 p.m. Register online at [https://kstate.qualtrics.com/jfe/form/SV\\_bDtNfILSWpjlL6S](https://kstate.qualtrics.com/jfe/form/SV_bDtNfILSWpjlL6S).

Come to learn the proper techniques for showing cattle, pigs, sheep, and goats! Presenters will discuss:

- Showmanship
- Feeding & Nutrition
- Clipping & Shearing

No animals are required! Livestock will be present to provide a showmanship demonstration. This is also a great opportunity to broaden your knowledge of showmanship techniques for different species! If you have questions, call Blaire Todd, Livestock Production Agent, at 785-738-3597 or email [blairet@ksu.edu](mailto:blairet@ksu.edu).

Register for the Showmanship Clinic today!



### SEE YOU AT DAY CAMP!



**Wild West Day Camp** is at the Mankato City Park, May 22 from 8:00 a.m. to Noon. All youth entering Preschool - 3rd Grade in the fall are welcome! Come explore interests and practice team work; be inspired to think critically and creatively; and have fun! Register and pay the \$5.00 fee (due to Post Rock District) to secure your spot by May 14 at <https://bit.ly/WildWestDayCamp> (follow QR code). Space is limited. This camp is sponsored by Jewell County 4-H Council.

**Outdoor Adventure Day Camp** is May 28 in Osborne at the Scout Cabin from 8:00 a.m. to Noon. All youth entering 1st - 4th Grade in the fall are welcome! Campers will participate in fun games, get creative with nature crafts, practice team work, and learn outdoor skills. Register and pay the \$5.00 fee (due to Post Rock District) to secure your spot by May 17 at <https://bit.ly/OutdoorAdventureDayCamp> (follow QR code). Space is limited. This camp is sponsored by Osborne County 4-H Council.



**Garden To Table Day Camp** is June 4 in Beloit at the fairground's 4-H Building from 8:00 a.m. to Noon. All youth entering Preschool - 3rd Grade in the fall are welcome! Explore growing plants, healthy eating, creativity, and having fun! Register and pay the \$5.00 fee (due to Post Rock District) to secure your spot by May 16 at <https://bit.ly/GardenToTableDayCamp> (follow QR code). Space is limited. This camp is hosted by Mitchell County 4-H Council.

# POST ROCK DISTRICT 4-H NEWSLETTER

## STATE AND DISTRICT NEWS

### STAY TUNED FOR MORE DISTRICT-WIDE SUMMER LEARNING

Post Rock District is excited to host four interns in our region this summer! Our interns will implement a wide-variety of interactive learning experiences for youth. Be on the lookout for exciting opportunities in all five counties! Follow [Post Rock District 4-H on Facebook](#) for updates. We'll also be posting programs on our website, [postrock.ksu.edu](http://postrock.ksu.edu).

### SENIOR SHOUT OUTS!

We want to celebrate our graduating high school seniors! We're going to dedicate shout outs to each senior on our [Post Rock District 4-H Facebook page](#). It is optional to be included. If interested, please email Tonia, [tiunderw@ksu.edu](mailto:tiunderw@ksu.edu), the following:



- 1) A photo or two (senior photo, favorite 4-H photo, or throwback childhood photo)
- 2) A quote or message (why you love 4-H, how you have benefited from being involved in 4-H, favorite 4-H memory, or a quote that has guided you through the years)

### COUNTY FAIR INFORMATION

Post Rock District county fairs will be here soon! Be watching your email for important reminders. We are also using the [PRD 4-H Insider Experience Facebook Group](#) to post reminders. Do not hesitate to reach out to your local Extension Office if you have any questions. If you are new to 4-H or new to a project, navigating the county fair can be confusing. Post Rock District staff, your club leader, and our entire 4-H family are here to help you!



**County Fair Websites:** [www.postrock.k-state.edu/4-h/county-fairs/](http://www.postrock.k-state.edu/4-h/county-fairs/)

Visit your fair website to find the online fairbooks, forms, and more... updated as available!

### REGISTER FOR DISCOVERY DAYS BY MAY 5

Discovery Days will be June 5-7 at the K-State Campus in Manhattan. This exciting event is for youth ages 13-18 years old. Post Rock District will provide a staff chaperone and transportation to and from Discovery Days. At Discovery Days, youth learn new ideas, techniques, and skills they can use personally and in their 4-H clubs or groups and communities. Register by May 5. Sign-up early to have the best choice of sessions. Find the schedule, sessions, and online registration link at the [Kansas 4-H Discovery Days website](#). After registering, you will need to pay your local 4-H Council your registration fee.

### ANIMAL SCIENCE AT DISCOVERY DAYS

Come join the K-State University Animal Science party in June during Kansas 4-H Discovery Days! Several animal science-related sessions will be offered at Discovery Days, from livestock project selection, to reproduction, companion animal nutrition, to meat science and chuck wagon cooking. Check out the course catalog for opportunities related to animal science and beyond!



# POST ROCK DISTRICT 4-H NEWSLETTER

## STATE AND DISTRICT NEWS



### PROJECT ENROLLMENT DUE MAY 1 IN 4-H ONLINE

Log in to [4-H Online](#) or contact your local Extension Office to review and update your projects! 4-H project experiences, opportunities and reminders are communicated to you by local and state 4-H staff based on your project enrollment and contact information in 4-H Online. **May 1 is the final project drop/add deadline if you want to exhibit in a respective project area at the county fair.**

### SET GOALS FOR SUMMER LEARNING

Setting measurable goals helps guide youth through a high quality 4-H project learning experience. Make sure you have clear goals for each enrolled 4-H project. This will help you focus your learning during the summer months. Use the [Kansas 4-H Setting 4-H Project Goals](#) resource to help you, or complete the goal section of your [Project Record Report](#) form.

### 4-H RECORD BOOK - DON'T WAIT TO BEGIN!

Don't delay getting your 4-H permanent and project record books started! Kansas 4-H offers paper-based and online record keeping forms. Work on them regularly this summer! Find details at the [www.postrock.k-state.edu/4-h/record\\_keeping\\_resources/](http://www.postrock.k-state.edu/4-h/record_keeping_resources/).

**Why 4-H records and reporting?** Record keeping and reporting are valuable life skills taught to members of the Kansas 4-H program. The purpose and objectives of 4-H records and reports:

- To learn how to set goals, how to make plans for action, and how to decide how well you did (evaluation).
- To learn the skills of record keeping and organization to use now and in the future. Examples: finances, taxes, health, immunizations, careers, scheduling, etc.
- To learn to communicate, prioritize, and summarize your project mastery and experiences.
- To practice responsibility by completing a task.
- To evaluate information that will market personal skills through future resumes and application forms.
- To allow 4-H members to tell how they have grown, what they have learned, where they came up short and to do it within outlined parameters.
- To provide an opportunity for competition at the County, Regional and State level.

### SPRING SHOWS AND YOUTH LIVESTOCK OPPORTUNITIES

The [K-State Youth Livestock Program's website](#) as a place dedicated to sharing youth livestock events and learning opportunities; [www.asi.k-state.edu/extension/youth-programs/events/](http://www.asi.k-state.edu/extension/youth-programs/events/). Most events are not sponsored by KSRE or 4-H. Contact each listed event contact with your questions.

# POST ROCK DISTRICT 4-H NEWSLETTER

## STATE AND DISTRICT NEWS

### NW KANSAS 4-H DOG CONFERENCE & SHOW

The NW Kansas 4-H Dog Conference & Show, hosted by Phillips-Rooks Extension District, will be at the Phillips County Fairgrounds on Saturday, June 22. It will offer a rotation of three workshops in the morning: Adventures in Agility, Ready for Rally Obedience, and Paws Together for Service (a service project for area animal shelters). In the afternoon, there will be a State Fair qualifying dog show for Agility and Rally Obedience ONLY. The workshops will be designed with the beginner in mind, but will be appropriate for all experience levels. They will also offer the on-leash levels of Pre-Agility and Rally Obedience that are not State Fair eligible for true beginners who would like to give it a try. Attending workshops (with or without a dog) only or show only will also be an option. You will find additional details on the [flyer posted on our 4-H events webpage](#). Questions should be directed to Cindy Walker, 785-543-6845.

### DOG PROJECT PRACTICES

Post Rock District's 4-H Dog Project Leader, Kelli Burrus, will be hosting spring Dog Project meetings on Sundays - May 5, 12, and 26 - at 3:00 p.m. at the Osborne County Fairgrounds covered arena. 4-H members can work with their dog on showmanship, obedience and rally obedience, and/or prepare for a State Fair qualifying show. In order to participate at the State 4-H Dog Show, members must receive a blue or purple ribbon at a qualifying dog show. If you want to show at state for dog, be sure to attend practices so you know about the current rule changes and set yourself up for success. Contact Kim Naber with questions at [kimn@ksu.edu](mailto:kimn@ksu.edu).

### POST ROCK DISTRICT DOG SHOW DATE HAS BEEN CHANGED



Post Rock District will host an annual district-wide dog show in place of five separate 4-H dog shows at each county fair. To help avoid other fair events, it has been changed to Monday, July 8, 2024 at 9:00 a.m. at the Osborne County Fairgrounds in Osborne. Pre-registration is due by end of day Monday, June 24th. This is a state qualifying show. Follow [Post Rock District 4-H events webpage](#) for updates.

### KANSAS STATE FAIR 4-H HORSE SHOW REQUIREMENTS

The State 4-H Horse Show will be on September 12 - 14. Entries are due August 1 via Kansas State Fair's ShoWorks entry system. Exhibitors must have completed ALL qualifications prior to August 1, including completing the Horse Safety Webinar and Exam. The guide "Are You Ready for the Kansas State Horse Show?" is helpful for setting goals and to help determine the level of exhibition for state level competition. Find it and many other resources on the [Kansas 4-H horse project website](#). The complete schedule for the 2024 Kansas State 4-H Horse Show can be found at the [Kansas 4-H State Fair website](#).

# POST ROCK DISTRICT 4-H NEWSLETTER

## STATE AND DISTRICT NEWS

### STATE FAIR ANIMALS

Exhibiting an animal beyond the 4-H division at a Post Rock District county fair means that ownership and identification must meet the requirements outlined by the specific show's governing body. The 4-H member is responsible for understanding the deadlines and expectations involved.

- Contact your local Extension Office as soon as possible if you are considering showing at the Kansas State Fair, so we can share resources to help you navigate the process.
- If your animal species doesn't classify for state livestock nomination, visit the [Kansas 4-H State Fairbook](#) for important ownership, verification, and exhibition deadlines and details.

### STATE LIVESTOCK NOMINATIONS - QUICKLY APPROACHING DEADLINES!

All market animals and commercial females you would like to be eligible for the Kansas State Fair Grand Drive and/or Kansas Junior Livestock Show (KJLS) must be nominated. The [Kansas Youth Livestock Program](#) website outlines the [State Livestock Nomination Process](#) under the "Nomination Information" tab. Families are highly encouraged to use the resources available, especially the [Rookie Guide](#).

The nomination process transitioned to an online system in 2022, so there are no longer physical forms for families to complete and mail. Families will purchase DNA envelopes in advance, submit their animal and exhibitor information online, then mail their completed and signed DNA samples by the deadline. Extension Agents and FFA Advisors will approve nominations online. Exhibitors who nominated animals in past years (2022 or 2023) need to use their existing ShoWorks account. Those who need help accessing their account may request a password reset through ShoWorks or contact the [Kansas Youth Livestock Program](#) for assistance. Returning exhibitors should not create a new account. The ShoWorks website is <https://kansasnom.fairwire.com/>.



**KANSAS  
YOUTH LIVESTOCK  
PROGRAM  
WEBSITE**

### Grand Drive and KJLS Important Dates:

- May 1: Market Beef Nominations Due & DNA Postmarked
- June 5: Last Day to Order Small Livestock DNA Envelopes
- June 15: Small Livestock Nominations Due & DNA Postmarked
  - Market Swine, Commercial Gilt
  - Market Lamb, Commercial Ewe
  - ALL Meat Goat (Market & Breeding)
- June 15: Commercial Heifer Nominations Due
- June 15: Registered Breeding Heifer Papers in Exhibitor's Name
- June 15: Registered Breeding Gilt Papers in Exhibitor's Name
- July 1: Registered Breeding Ewe Papers in Exhibitor's Name
- July 15: Kansas State Fair Grand Drive Entry Deadline
- July 25: Kansas State Fair Grand Drive Late Entry Deadline
- August 15: KJLS Entry Deadline
- August 25: KJLS Late Entry Deadline
- September 6 - 8: Kansas State Fair Grand Drive
- September 27-29: Kansas Junior Livestock Show

# POST ROCK DISTRICT 4-H NEWSLETTER

## STATE AND DISTRICT NEWS

### SHOOTING SPORTS STATE QUALIFIERS

There are a variety of 4-H shooting sports activities going on by our Post Rock District certified instructors. Youth are required to participate in practices and learning experiences with a certified instructor in order to be eligible to compete. Contact Tonia at [tiunderw@ksu.edu](mailto:tiunderw@ksu.edu) if you have questions. Post Rock District is organizing an Archery Qualifier to take place at Waconda Lake the morning of Sunday, July 21. Youth must qualify in shooting sports disciplines in order to attend a state match. Qualifiers scheduled around the state are posted at the [Kansas 4-H Shooting Sports website](#) as information becomes available.

### GEOLOGY FIELD TRIP IN NW KANSAS

The Geology Field Trip will be June 14-16 and is open to 4-H Geology project members and their families. All attending youth/adults must register by May 24. The headquarters for this trip are at Trego Community High School, WaKeeney, KS. A variety of workshops and activities are planned for Friday and Saturday evenings. Many stops are planned on the Field Trip Saturday and Sunday. Project members are encouraged to participate in judging and quiz bowl. Details and registration are on the [Kansas 4-H event webpage](#).

### INSECT SPECTACULAR

The Kansas 4-H Insect Spectacular, a two-day state-wide entomology workshop, will be held June 21-22 in Hays. The event is open to all youth and adult volunteers interested in 4-H entomology! Classes will include basic pinning, basic and advanced identification, insect photography, and much more. A parent or legal guardian must register and attend with their 4-H'er. For more information and to register, go to the [Insect Spectacular website](#). Registration deadline is May 30.

### STATE 4-H HORTICULTURE JUDGING

The State 4-H Horticulture Judging Contest will be held on Saturday, August 10 in Manhattan (tentative date). The contest is hosted for the day by the Department of Horticulture and Natural Resources. The objective of 4-H Horticulture Judging is for members to grow in their ability to think, to reason, and to make logical and scientific judgments, through plant identification, knowledge testing and judging classes. Interested youth should notify their Extension Office so we can form district teams. Adult volunteer coaches are also needed. If you want to participate, we can connect you with study resources. For more information, go to the [State 4-H Horticulture Judging website](#).

### WHEAT EXPO

The 2024 Kansas 4-H Wheat Expo will be held Monday, August 12 at Pottorf Hall in Manhattan, KS. The day includes contests and exhibit opportunities for Crops ID, Photography, Foods, Wheat, Project Displays, and Cloverbuds. Participants will also have the opportunity learn more about Kansas wheat through tours of industry partners. For additional information and to register go the [Kansas 4-H event webpage](#).

# POST ROCK DISTRICT 4-H NEWSLETTER

## STATE AND DISTRICT NEWS

### K-STATE MANHATTAN SUMMER CAMPS

Every summer, K-State hosts summer programs designed to educate and inspire youth in a variety of academic, athletic and extracurricular endeavors. Participants have the opportunity to further their education and skills while experiencing life at K-State. Check out the amazing opportunities at [www.k-state.edu/summer/camps/](http://www.k-state.edu/summer/camps/)... a few are listed below!

- [Vet Med ROCKS Summer Camp](#)
- [Young Writers' Workshop](#)
- [Health Professions Exploration Program](#)
- [Farm to Fashion Camp](#)
- [Feeding Your Future Summer Camp](#)
- [GROW Summer Workshop](#)

### K-STATE SALINA STEM SUMMER CAMPS

Experience the power of K-State Salina when you attend any of our hands-on, interactive summer camps! With topics ranging from unmanned aircraft systems to robotics to aviation, there's something for everyone! Kansas State Aerospace and Technology Campus summer programs are learning based programs for K-12 students. Explore the variety of offerings at [www.salina.k-state.edu/academics/youth-programs/summer/](http://www.salina.k-state.edu/academics/youth-programs/summer/).

### DR. BOB HINES SWINE CLASSIC

The 2024 Dr. Bob Hines Kansas Swine Classic is scheduled for July 12-13 in Manhattan. This two-day event includes an educational swine skillathon, photography contest, showmanship, and a prospect and market hog show. The flyer is available at [KSUswine.org](http://KSUswine.org).

### K-STATE LIVESTOCK JUDGING CAMPS

The K-State Livestock Judging Team camp sessions will be June 3-5 and June 10-12. In addition to evaluating livestock, this camp focuses on reason development and presentation, as well as incorporating performance data into the decision-making process. It is open to youth 14-18 years old. Prior livestock judging experience is necessary for this camp. Additional details and registration forms are on the [Champions Livestock Judging Camp website](#). Registration is open.

### KSU HORSE JUDGING TEAM ADVANCED CAMP

KSU Horse Judging Team's One Day Advanced Camp is June 13 at the Stanley Stout Center. This is for 4-H and FFA youth with experience in giving reasons or participating in horse judging competitions who are looking to seriously enhance their knowledge. Registration closes May 24. For more information visit the [judging camp website](#).

### PHOTOGRAPHY SHUTTERBUG WORKSHOP

Shutterbug workshops are for photography members to learn and practice skills. The workshops are put on by the Kansas State 4-H Photography Committee. There is a Shutterbug workshop at the Zoo in Garden City on May 4. Check-in begins at 8:30 a.m. See the flyer and details on the [Photography Shutterbugs website](#). The website has information about other learning opportunities, too.

# POST ROCK DISTRICT 4-H NEWSLETTER

## STATE AND DISTRICT NEWS

### KANSAS 4-H LIVESTOCK SWEEPSTAKES

The Kansas 4-H Livestock Sweepstakes is in Manhattan on August 17-18. It includes the state 4-H livestock judging contest, meat judging contest, livestock skillathon, and livestock quiz bowl in one action-packed weekend. 4-H'ers can test their knowledge and display their expertise in a variety of livestock-related events. This is also the qualifying event to select youth who will represent Kansas at each of the national 4-H contests. All entries must be submitted through local extension units by August 1.

Contact your local Extension Office if you want to participate. We register you from the extension unit as Post Rock District, and these are due by August 1. We can combine youth from across Jewell, Lincoln, Mitchell, Osborne and Smith counties into Post Rock District teams. Adult volunteers are needed to serve as coaches if any teams sign-up. If there is enough interest we can assist coaches with coordinating district-wide educational practices. Post Rock District does not provide transportation to Sweepstakes and all costs are at the expense of the participants. Additionally, we do not provide transportation or organize teams for any competitions leading up to the Sweepstakes (outside of your county fair offerings), yet we are happy to help connect you with other youth/families exploring these opportunities.



- Encourage and support positive youth development through 4-H
- Collaborate with volunteers and community partners to plan and facilitate events and educational activities
- Network of support and professional development
- Purposeful work with a fun team
- Part-time position; Flexible schedule; Some nights/weekends
- Ideal candidate will be:
 

Friendly	Detail-oriented
Organized	Reliable
Good communicator	Creative



**4-H PROGRAM COORDINATOR**  
**APPLY TODAY!**  
 Find the position description and application procedure at [postrock.ksu.edu](http://postrock.ksu.edu)

K-State Research and Extension's Post Rock District serves Jewell, Lincoln, Mitchell, Osborne, and Smith Counties. Position is open until filled. A criminal background check is required.  
**Kansas State University Agricultural Experiment Station and Cooperative Extension Service**  
 K-State Research and Extension is an equal opportunity provider and employer.

## JOIN OUR TEAM AS AN OFFICE PROFESSIONAL



- customer service
- program assistance
- clerical support
- business operations
- creative design

### OSBORNE, KS OPPORTUNITY

#### APPLY TODAY!

Find the position description and application procedure at [postrock.ksu.edu](http://postrock.ksu.edu)



K-State Research and Extension's Post Rock District serves Jewell, Lincoln, Mitchell, Osborne, and Smith Counties.  
 Position is open until filled. Applicant screening begins immediately.  
 A criminal background check is required.

**Kansas State University Agricultural Experiment Station and Cooperative Extension Service.**  
 K-State Research and Extension is an equal opportunity provider and employer.

K-State Research and Extension is committed to providing equal opportunity for participation in all programs, services and activities. Program information may be available in languages other than English. Reasonable accommodations for persons with disabilities, including alternative means for communication (e.g., Braille, large print, audio tape, and American Sign Language) may be requested by contacting the event contact four weeks prior to the start of the event. Post Rock District staff and office contact information is available at [www.postrock.ksu](http://www.postrock.ksu). Requests received after this date will be honored when it is feasible to do so. Language access services, such as interpretation or translation of vital information will be provided free of charge to limited English proficient individuals upon request.

**Kansas State University Agricultural Experiment Station and Cooperative Extension Service**  
 K-State Research and Extension is an equal opportunity provider and employer.