

GARDEN TO TABLE DAY CAMP

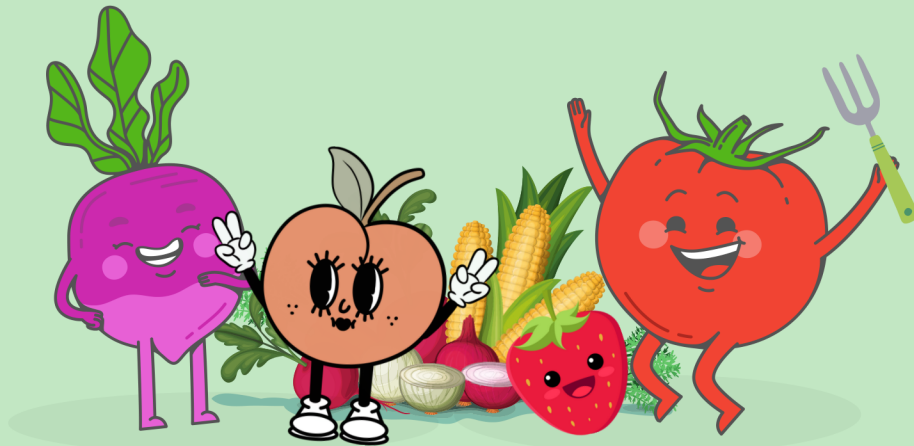
Hosted by Mitchell County 4-H Council!

June 4, 2024 in Beloit

8:00 a.m. - Noon

4-H Building, Mitchell County Fairgrounds (N Walnut St)

All youth entering Preschool - 3rd Grade in the fall are welcome!



Come explore interests; practice team work;
be inspired to think critically and creatively;
learn about gardening and living a healthy,
active lifestyle; and have fun!

Register by May 16 at <https://bit.ly/GardenToTableDayCamp> (follow QR code).

A \$5.00 fee is due to Post Rock District. Non-refundable. Space is limited!

Pay with cash/check at any Post Rock District Extension Office.

Beloit's office is in the Mitchell County Courthouse.

K-STATE
Research and Extension



Post Rock
District

DANE G. HANSEN
FOUNDATION

K-State Research and Extension is committed to providing equal opportunity for participation in all programs, services and activities. Program information may be available in languages other than English. Reasonable accommodations for persons with disabilities, including alternative means for communication (e.g., Braille, large print, audio tape and American Sign Language) may be requested by contacting the event contact, Tonia Underwood, four weeks prior to the start of the event, May 7, 2024, at 785-738-3597 or tiunderw@ksu.edu. Requests received after this date will be honored when it is feasible to do so. Language access services, such as interpretation or translation of vital information will be provided free of charge to limited English proficient individuals upon request. Kansas State University Agriculture Experiment Station and Cooperative Extension Service. K-State Research and Extension is an equal opportunity provider and employer.