

# CENTRAL KANSAS DISTRICT 4-H



## UAS WORKSHOP

MARCH 15, 2025, 10:30AM-5:00PM  
K-STATE SALINA CAMPUS

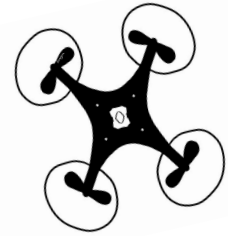
### Who should register:

Youth ages 7-18 who have an interest in Uncrewed Aircraft Systems

### Registration:

Please register at: <https://tinyurl.com/CKD2025UASWorkshop>

Each individual (including parents/guardians) will need to register. Registrations are due online by March 10, 2025. If you have questions, please call 785-309-5850.



## Event Objectives

- Safety Rules
- Flight Basics
- Drone Flights
- Obstacle Course Flight Competition

### Cost:

\$15/person, includes lunch and contest fees. Payment must be made to Central Kansas District 4-H Council and needs to be received by the registration deadline. Payments may be mailed to the Central Kansas District 4-H Council at 2218 Scanlan Avenue; Salina, KS 67401

### Attire & What to Expect:

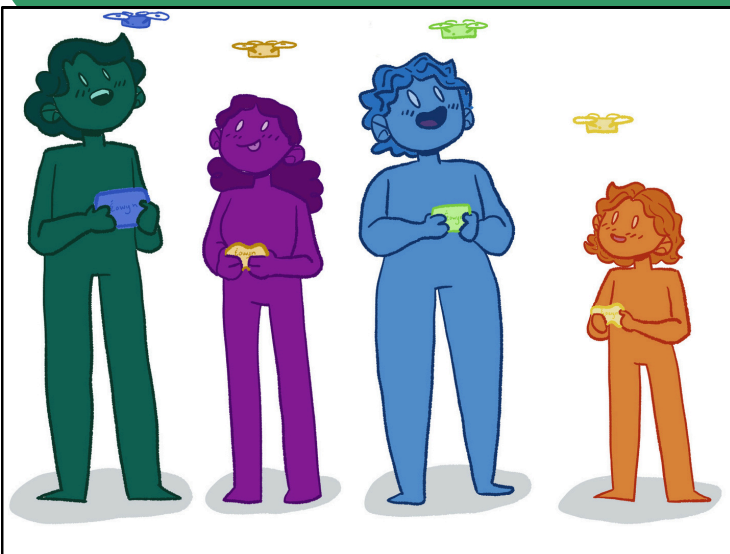
Dress code is casual. The day will feature sessions covering the basics (including rules and flight overview), flight competition, and prizes.

### Additional Information:

Please plan to arrive and sign-in at 10:30 a.m. at the College Center Conference Room on the K-State Salina Campus.

Participants will be using the equipment provided. Please do not bring your own drone.

Please join us in special thanks to 4-H Member Eian Pracht for his leadership to plan the workshop and to Acacia Pracht for her artwork for the flyer.



Kansas State University Agricultural Experiment Station and Cooperative Extension Service.

K-State Research and Extension is an equal opportunity provider and employer.

### Accommodations:

K-State Research and Extension is committed to providing equal opportunity for participation in all programs, services and activities. Accommodations for persons with disabilities may be requested by contacting the event contact Kate Littich two weeks prior to the start of the event (March 1) at [klittich@ksu.edu](mailto:klittich@ksu.edu) or 785-309-5850. Requests received after this date will be honored when it is feasible to do so.



**K-STATE**  
Research and Extension

Central Kansas District