



# POST ROCK DISTRICT 4-H NEWSLETTER

## APRIL 2025

🌐 [POSTROCK.KSU.EDU](http://POSTROCK.KSU.EDU) ✉️ [POSTROCK4H@KSU.EDU](mailto:POSTROCK4H@KSU.EDU)



## SAFE TRACTOR & MACHINERY OPERATION TRAINING APRIL 26 IN BELOIT

The National Safe Tractor and Machinery Operation Program (NSTMOP) is designed for 14- and 15-year-olds seeking employment in production agriculture. Core content areas focused on during the one-day training include safety basics, agricultural hazards, tractors, connecting and using implements, materials handling, and more! Students are certified after successfully passing a knowledge test at the training and doing both an operating skills test and a driving test administered by their employer.

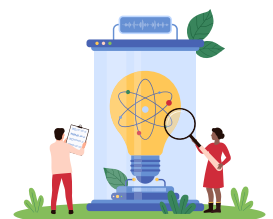
The cost to participate is \$15 due to your local Extension office. Prior to the course, each participant must pick up a manual and complete a pre-test before attending the training event. For questions, contact Blaire Todd at [blairet@ksu.edu](mailto:blairet@ksu.edu) or 785-738-3597. The flyer is on the [Post Rock District website](http://PostRockDistrict.com). Register online at <https://bit.ly/tractorsafety2025>. The registration deadline is one week before the date you plan to attend. Training dates in the region include: April 5th - Ellsworth at Carrico Implement; **April 26th - Beloit at Carrico Implement**; May 10th - Washington at Bruna Implement Company; and May 22th - Solomon at KanEquip, Inc.

## NW KANSAS 4-H - AGRICULTURAL AMBASSADOR PROGRAM APPLICATIONS DUE APRIL 15

The Northwest Kansas 4-H Agricultural Ambassador Program is accepting applications until April 15! The ambassador program will be a premier leadership opportunity for youth ages 13 to 18 (current 8th grade through Senior in high school) who are passionate about agriculture and are willing to complete a one-year term. The program focuses on connecting youth with their local agricultural industries, exploring the richness and diversity of Kansas opportunities, developing ag advocacy skills and fostering educational mindsets, and increasing access to career and post-secondary experiences within the agriscience world. Participation/membership in 4-H is not required. For more information, a copy of the flyer, and to view the application process, visit the Twin Creeks District website at: <https://www.twincreeks.k-state.edu/youth-ag/index.html>. For questions about the program, contact Twin Creeks District Youth Agriculture Agent, Jenilee Godsey. (Phone: 785-421-3411, Email: [jenileem@ksu.edu](mailto:jenileem@ksu.edu)).

## TEEN-LED PROJECT LEARNING

As you advance in 4-H, teens are challenged to plan and implement learning experiences to help others gain knowledge and skills in project areas. If you are interested in leading a project workshop or 4-H promotional experience in the summer, contact your local office so we can help you promote and support your effort. Learn how to be a Post Rock District 4-H Ambassador at [www.postrock.k-state.edu/4-h/member-resources/ambassadors/](http://www.postrock.k-state.edu/4-h/member-resources/ambassadors/)



# MITCHELL COUNTY CLOVER CONNECTION

📧 [POSTROCK.KSU.EDU](mailto:POSTROCK.KSU.EDU)

📞 (785)738-3597

✉️ [DJBECHARD@KSU.EDU](mailto:DJBECHARD@KSU.EDU)

DENAE BECHARD, OFFICE PROFESSIONAL

## Small Animal Weigh-in

Small animal weigh-in is on Wednesday, April 16 from 4:00 to 6:00 p.m. at the Mitchell County Fairgrounds.

This weigh-in is for market sheep, swine, and goats and you must attend to be in the rate-of-gain contest. Also a reminder that all EID tagging (for state fair participation) must be witnessed by a Post Rock District employee, so this is an opportunity to get those animals tagged as well.

Mitchell Co 4-H tags (beef and small animal) are free

Beef EID tags: \$3.50

Swine/Goat/Sheep EID tags: \$2.75

## 4-H Council Bake Sale

A bake sale fundraiser will be held in the First Bank of Beloit meeting room on Friday, April 18th - Council Bake Sale. Each 4-H family is asked to bring 2 baked goods to the bank by 8 a.m. that morning.

## Project Add/Drop Deadline is May 1

The deadline for enrolling in projects in 4-H Online is May 1. Remember: *if you are not enrolled in a project area in 4-H Online by May 1, you cannot exhibit in that project area at the fair.* This also helps us know how many judges to invite!

## Senior 4-H Scholarships Due May 1

Graduating seniors are eligible to apply for multiple 4-H scholarships! Find the applications at [postrock.k-state.edu](http://postrock.k-state.edu) > 4-H > Member Resources > [Education Scholarships](#)

## 2025 Mitchell Co Fair Details

- **Date:** July 23 - 26
- **Theme:** Barn In The USA
- **Pre-fair deadline: July 7th** (livestock entry forms, pen rent fees, fashion revue pre-entry forms & scripts cards due)
- **Pre-fair judging** (foods, visual arts, fashion revue) has moved back to the Christian Church this year
- **Clean up duties:** please contact the Extension office **BEFORE** cleaning to communicate the date(s) you intend to clean up and to get the checklist for your area
  - **West Beloit:** pre-fair 4-H building, kitchen, and restrooms
  - **Tipton:** pre-fair livestock barns
  - **Asherville Achievers:** after fair 4-H building, kitchen, and restrooms

## 4-H Fair Superintendents Needed

Volunteer superintendents make fair possible! Tasks vary from project-to-project, but generally superintendents help with set up and check in, assist with paperwork, help judges stay organized, and set up the displays at the fair building. We are looking for superintendents for Plant Science, Rabbit/Poultry/Pet Show, and Woodworking/Ag Mechanics. If you would like to be a Superintendent for any of these areas, please call the Extension Office at 785-738-3597 or email DeNae at [djbechard@ksu.edu](mailto:djbechard@ksu.edu).

# THE GREEN LINK DISTRICT & STATE NEWS

 [POSTROCK.KSU.EDU](http://POSTROCK.KSU.EDU)  [POSTROCK4H@KSU.EDU](mailto:POSTROCK4H@KSU.EDU)  
POST ROCK DISTRICT 4-H NEWSLETTER



## PROJECT ENROLLMENT DUE MAY 1 IN 4-H ONLINE

**MUST BE ENROLLED IN PROJECTS TO EXHIBIT  
AT COUNTY FAIR!**

Log in to [4-H Online](#) or contact your local Extension Office to review and update your projects! 4-H project experiences, opportunities and reminders are communicated to you by local and state 4-H staff based on your project enrollment and contact information in 4-H Online. **May 1 is the final project drop/add deadline if you want to exhibit in a respective project area at the county fair.**

## COMMIT TO FAIR PROJECTS BY MAY 1

In order for high quality project learning to take place through 4-H/FFA, projects (animals and non-animals) are recommended to be owned during the spring (ideally before May 1). This provides the young person a great opportunity to develop valuable life skills through 4-H/FFA project learning experiences in preparation for the county fair's showcase events. All exhibits entered in the 4-H/FFA division of a county fair must be the handiwork of the exhibitor; the grower, where agricultural exhibits are shown; and the owner and feeder, where livestock is entered. All exhibits entered in the 4-H/FFA division of a county fair must be the result of the current program year's work. Ownership is defined so that the project (animal, garden, crop, exhibit creation, sewing, photo, etc.) is under the daily care and supervision of the member; all project-related practices, expenses, and management are the responsibility of the member; and all county fair exhibits should be a planned part of the project.

## PRE-FAIR ENTRY DEADLINE: PROJECT VERIFICATION

Each 4-H Council in the Post Rock District will designate a pre-fair entry deadline. *The pre-fair entry deadline is when all project exhibits must be designated for the class which will be shown at the county fair.* It is an ownership and verification deadline. Entries can be dropped, but not added after the pre-fair deadline. Any project areas not required by 4-H Council to meet the pre-fair deadline will submit entry requirements at the project's fair check-in time. Check your county's 4-H newsletter page to find the pre-fair entry deadline set for your respective county fair. This is a very important date to have marked on your calendar if you want to exhibit a 4-H project (animal and non-animal) at the county fair!

## SET GOALS BY MAY 1

Setting measurable goals helps guide youth through a high quality 4-H project learning experience. If you haven't yet, May 1 is a good deadline to set to make sure you have clear goals for each enrolled 4-H project. This will help you focus your learning during the summer months. Use the [Kansas 4-H Setting 4-H Project Goals](#) resource to help you, or complete the goal section of your [Project Record Report](#) form.



# THE GREEN LINK DISTRICT & STATE NEWS

 [POSTROCK.KSU.EDU](http://POSTROCK.KSU.EDU)  [POSTROCK4H@KSU.EDU](mailto:POSTROCK4H@KSU.EDU)  
POST ROCK DISTRICT 4-H NEWSLETTER

## SENIOR SHOUT OUTS - EMAIL TO TONIA BY APRIL 15



We want to celebrate our graduating high school seniors! We're going to dedicate shout outs to each senior on our Post Rock District 4-H Facebook page during the spring months. It is optional to be included. If interested, before April 15 please email Tonia, [tiunderw@ksu.edu](mailto:tiunderw@ksu.edu), the following:

- A photo or two (senior photo, favorite 4-H photo, or throwback childhood photo)
- A quote or message (why you love 4-H, how you have benefited from being involved in 4-H, favorite 4-H memory, or a quote that has guided you through the years)

## VOLUNTEER SHOUT OUT OPPORTUNITY - SUBMIT BY APRIL 15

National Volunteer Week is April 20-26. This is an excellent opportunity for your family or club to execute a plan to recognize volunteers in your community and county. 4-H is successful because of contributions from our amazing volunteers!



- If you would like to give a special shout out to a club leader, project leader, or another important 4-H volunteer please send a testimonial and photo to Tonia at [tiunderw@ksu.edu](mailto:tiunderw@ksu.edu). We can share it on the Post Rock District Facebook page. Please submit these by April 15 so we can share them during volunteer week!
- Recognizing volunteers could be a fun activity for a 4-H club committee or a unique project for the officer team to work on together.
- Michigan 4-H has a great worksheet to help youth learn to write a quality thank you. Find it at <https://www.canr.msu.edu/uploads/236/66837/CYI048ThankYouNoteHandout.pdf>

## DISCOVERY DAYS - JUNE 4-6 AT K-STATE MANHATTAN

Discovery Days is a state 4-H opportunity for youth 13-18 years old (before January 1) to develop college and career readiness skills which prepare participants academically and socially for a successful transition to college and life as an adult. Post Rock District will provide a chaperone and transportation. Save the date and let your local office know if you are interested so we can share registration as soon as it opens later this spring! Learn more at the [Kansas 4-H event website](#).

## ANIMAL SCIENCE LEADERSHIP ACADEMY - APPLY BY APRIL 15

Applications are due for the 2025 K-State Animal Science Leadership Academy. The goal of this academy will be to further develop young leaders within the livestock industry and prepare them for a successful future in this field. The four-day experience for selected teens is hosted by the K-State Department of Animal Sciences and Industry. In 2025 the program will be held June 11-14. Applications must be postmarked by April 15. Find all the details at the [KASLA event website](#).

## POST ROCK DISTRICT OFFICE VISITS

It's always a good idea to call before you visit your local Post Rock District Extension Office, so we can be ready to assist you with your 4-H need or question. We try to keep the office open during business hours, but sometimes we are out serving in the community and our office needs to be closed to walk-in traffic. You can find our contact information at [www.postrock.ksu.edu](http://www.postrock.ksu.edu). Note these April dates:

- April 1 - All PRD Offices closed for all staff training
- April 18 - All PRD Offices closed for Easter holiday
- April 28 - Offices closed for all staff training

# THE GREEN LINK DISTRICT & STATE NEWS

 [POSTROCK.KSU.EDU](https://postrock.ksu.edu)  [POSTROCK4H@KSU.EDU](mailto:POSTROCK4H@KSU.EDU)  
POST ROCK DISTRICT 4-H NEWSLETTER

## PHOTOGRAPHY SHUTTERBUG EVENTS

Kansas 4-H Shutterbug events are photography workshops put on across the state, and are a perfect opportunity to develop new camera skills, hone your creative talents and try new photography techniques. Workshops are typically scheduled as a morning session and concentrate on a variety of aspects of composition. Sessions focus on topics including Portfolio, Camera Features, Panning, Close-ups, Aperture Settings & Kaleidoscopes/Reflections. Save the date and watch the [Kansas 4-H event website](#) for event flyers and registration details as they become available. If you have an interest in an event, let your local office know so we can help keep you connected with details.

- May 3: Shutterbugs at the Botanica Gardens, Wichita
- Fall 2025: Shutterbugs in Manhattan and Hays

## CELEBRATE 80 YEARS AT ROCKS SPRINGS RANCH - APRIL 12 & 13

The Kansas 4-H Foundation is excited to invite you to join us in celebrating 80 years of Rock Springs Ranch! Our team is hosting a weekend of fun and meaningful events, and we'd love for you to be part of the celebration.

- **Camp Beautification Day**, April 12, 9:00 a.m. - Noon: Help us prepare for summer camp with various volunteer projects. A volunteer appreciation lunch will be held at Noon. RSVP: [Camp Beautification RSVP Form](#)
- **Ice Cream Social**, April 12, 1:00 - 3:00 p.m.: Enjoy a sweet treat at Rock Springs Ranch.
- **4-H Camp Open House and Camp Tour**, April 13, 1:00 - 4:00 p.m.: Celebrate 80 Years of Rock Springs Ranch! Come and join us for a tour of the property, meet our staff and learn all about the fun to be had at Kansas 4-H Camp at Rock Springs Ranch. Guests will get to see our cabins, activity center, pool, ropes course, horses, dining hall, and lots more. Our team is so excited to meet you and answer all of your questions. More details and RSVP online at <https://rockspringsranch.org/events/open-house>.
- **Share Memories:** Please consider sharing your favorite memories from Rock Springs Ranch as the Kansas 4-H Foundation highlights 80 years of the state 4-H center. [Memory Submission Form](#)

## 4-H VOLUNTEERING TRAINING - APRIL 26 IN SALINA

The Kansas Association of 4-H Volunteers is hosting "Spring Into Volunteering" on Saturday, April 26 in Salina on the K-State Campus. Registration will begin at 9:00 a.m. and the event will conclude at 3:00 p.m. This experience is for current and interested club leaders, project leaders, and volunteers. The goal is for participants to go home recharged, excited, and ready to try some new things in their volunteer roles. Fee is \$20 and includes materials, snacks, and lunch. For more details and a registration link go to [www.kansas4-h.org/volunteers/volunteer-continuing-education/](http://www.kansas4-h.org/volunteers/volunteer-continuing-education/).



## GEOLOGY FIELD TRIP TO FEATURE NORTH CENTRAL KANSAS

The state Kansas 4-H Geology Field Trip is scheduled for June 13-15. It will feature North Central Kansas, with Concordia serving as the experience's headquarters. Save the date! More information about the 2025 field trip will be posted soon at the [Kansas 4-H event website](#). If you have an interest in participating, let your local office know so we can help keep you updated with registration and other details as they become available.

# THE GREEN LINK DISTRICT & STATE NEWS

 [POSTROCK.KSU.EDU](http://POSTROCK.KSU.EDU)  [POSTROCK4H@KSU.EDU](mailto:POSTROCK4H@KSU.EDU)  
POST ROCK DISTRICT 4-H NEWSLETTER

## DOG PROJECT EXPERIENCES IN POST ROCK DISTRICT

**Spring Project Meetings:** Post Rock District Dog Project Leader, Kelli Burrus, will be leading dog project meetings at the Osborne County Fairgrounds on spring Sunday afternoons at 3:00 p.m. Dates are April 13, 27; May 4, 18; and June 1. No prior experience or knowledge is required to attend, just a desire for you and your dog to have fun while learning. Kelli understands everyone is busy so come to the meetings you are available to attend. ***It is important to be registered in 4-H Online in the dog project, so please call your local extension office to make sure you are in the project.*** To help with preparations, please RSVP interest in participating by emailing Kim Naber at [kimn@ksu.edu](mailto:kimn@ksu.edu).



**Fair Dog Show:** The 2025 Post Rock District 4-H Dog Show has been set for the morning of Saturday, June 14. The reason for setting the date in June is that it provides a date in advance of the Post Rock District county fairs to avoid 4-H scheduling conflicts. This is the official dog show for all county fairs. Due to the uniqueness of this project, we do not have a dog show at each county fair; instead, we do the dog project as a district-wide show.

**Mock Dog Show:** To help dog project members prepare for the dog show, there will be a mock show on June 13 in Osborne. More details will be shared as the date gets closer.

**State Fair Qualifiers:** If you want to show at the state fair, your dog must qualify. You can find a listing of qualifier shows and other opportunities across the state at <https://www.kansas4-h.org/educational-experiences/project-based-events/conferences-events/dog/local-dog-events/>

## SHOOTING SPORTS EXPERIENCES IN POST ROCK DISTRICT

**Practices Required to Compete:** There are a variety of shooting sports activities planned for the spring by our Post Rock District certified instructors. Youth properly enrolled in the respective disciplines will receive emails sharing about practices. Be sure to get enrolled in 4-H Online if you want to participate. You must attend practices to be eligible to compete at 4-H matches. Post Rock District has instructors for BB gun, Archery, and Shotgun. Contact Tonia at [tiunderw@ksu.edu](mailto:tiunderw@ksu.edu) if you have questions.

**Instructor Training Interest - Notify Tonia by April 3:** Kansas 4-H Shooting Sports will be having a Shooting Sports Instructor Training on May 10-11 at Rock Springs Ranch. Post Rock District can only offer shooting sports experiences that are led by certified instructors, and we are in need of more! If you are interested contact Tonia Underwood at [tiunderw@ksu.edu](mailto:tiunderw@ksu.edu) so we can start the process for you to become a certified instructor! Starting the process by April 3 will allow you plenty of time to be approved to attend the in-person certification training. New instructors must be screened and registered as a 4-H volunteer which includes enrolling in 4-H Online, completing a background check, completing an orientation, and being approved by the Post Rock District. Before attending the in-person Instructor Training, you must also complete the National 4-H Shooting Sports online modules. You can be trained in one discipline at the state training. The cost to become an instructor is your own, but sometimes 4-H Councils will provide support to instructors that plan to host project meetings in the local county.

**Archery Qualifier in Post Rock District on July 27:** Stede Underwood, certified instructor, is planning to organize a 4-H Archery Qualifier at Glen Elder State Park on July 27. Save the date. Details will be emailed to members enrolled in the archery project as they become available. You have to qualify for State Archery at a local qualifier. You can attend a qualifier anywhere in Kansas, and you are allowed to attend as many as you want to register for. The state will post qualifier dates and registration information at [www.kansas4-h.org/projects/natural-resources/shooting-sports/shooting-sports-events/local-qualifiers.html](http://www.kansas4-h.org/projects/natural-resources/shooting-sports/shooting-sports-events/local-qualifiers.html).

# THE GREEN LINK DISTRICT & STATE NEWS

 [POSTROCK.KSU.EDU](http://POSTROCK.KSU.EDU)  [POSTROCK4H@KSU.EDU](mailto:POSTROCK4H@KSU.EDU)  
POST ROCK DISTRICT 4-H NEWSLETTER

## K-STATE MANHATTAN SUMMER CAMPS

Every summer, K-State hosts summer programs that spark curiosity and fuel inspiration! The experiences are designed to educate and support youth in a variety of academic, athletic, creative, and extracurricular endeavors. Participants have the opportunity to further their education and skills while experiencing life at K-State. Check out the amazing opportunities at [www.k-state.edu/summer/camps/](http://www.k-state.edu/summer/camps/)... a few are listed below!

- [Vet Med ROCKS Summer Camp](#), July 28/29/30
- [Musical Theatre Camp](#), July 6-12
- [Health Professions Exploration Program](#), June 8-13/22-27
- [Champions Livestock Judging Camps](#), TBD
- [Farm to Fashion Camp](#), July 7-10
- [Feeding Your Future Summer Camp](#), July 22-26
- [GROW Summer Workshop](#), June
- [Youth Horse Judging Camps](#), TBD



## AEROSPACE AND TECHNOLOGY SUMMER PROGRAMS AT K-STATE SALINA

Experience the power of K-State Salina when you attend any of their hands-on, interactive summer camps. Topics range from unmanned aircraft systems to robotics to aviation! K-State Aerospace and Technology summer programs are for K-12 students. Explore the opportunities and registration details at [www.salina.k-state.edu/academics/youth-programs/summer/](http://www.salina.k-state.edu/academics/youth-programs/summer/).

## SCIENCE SUMMER CAMPS AT FORT HAYS STATE UNIVERSITY

Fort Hays State University's Science and Mathematics Education Institute (SMEI) is hosting a variety of summer camps in June for rising 2-8 graders. Camp themes relate to weather, energy, robotics, and more! Find camp details and registration information at [www.fhsu.edu/smei/camps/](http://www.fhsu.edu/smei/camps/).

## 4-H SUMMER CAMP AT ROCK SPRINGS RANCH

Rock Springs Ranch offers unique 4-H Summer Camp experiences. Explore all camp sessions and offerings at <https://rockspringsranch.org/summer-camps/sessions-rates>.

## MEAT JUDGING CONTEST AT K-STATE MANHATTAN ON APRIL 5

The K-State Invitational Meat Judging Contest is April 5 at KSU Weber Hall's meat lab in Manhattan. The experience will have evaluation classes, some questions, and retail ID. There will be an educational walk through after the contest. Registrater online at [judgingcard.com](http://judgingcard.com). Direct questions to Erin Beyer at [erbyer@ksu.edu](mailto:erbyer@ksu.edu)

## CLOVIA OPEN HOUSE AT K-STATE MANHATTAN ON APRIL 26

Clovia is a 4-H Cooperative Leadership House for girls located near KSU in Manhattan. Living at Clovia is a great opportunity as it is one of the only ways to live off campus freshman year. It provides a community of caring friends, leadership development, accountability and fun. Details about Open House on April 26 are at <https://www.alphaofclovia.org>.

# THE GREEN LINK DISTRICT & STATE NEWS

 [POSTROCK.KSU.EDU](https://POSTROCK.KSU.EDU)  [POSTROCK4H@KSU.EDU](mailto:POSTROCK4H@KSU.EDU)  
POST ROCK DISTRICT 4-H NEWSLETTER

## STATE 4-H VIDEO CONTEST - COOL CAREERS

Kansas 4-H, in partnership with HirePaths, is excited to announce the Cool Careers 4-H Video Contest. This unique opportunity invites 4-H members to explore career related to their projects and share their finding through a 4-10 minute video. Participants, either individually or in teams of up to four, will interview professionals in a chosen field and create an engaging video aimed at 4th -8th grade students. The contest helps youth learn more about different careers, while also developing skills in video production and storytelling. Entries are due by August 1. For more information and to enter, visit the [Kansas 4-H event website](#).

## STATE 4-H WHEAT EXPO

The Kansas 4-H Wheat Expo will be August 7 at the South Hutchinson Community Building. Youth participants have the opportunity to take part in hands-on judging opportunities including a Crop ID contest, exhibiting wheat related projects for foods, photography, and wheat variety plot educational displays. For more information visit the [Kansas 4-H event website](#). For study materials and support, contact Sandra Wick Post Rock District's Crop Production Extension Agent. Call 785-282-6823 or email her at [swick@ksu.edu](mailto:swick@ksu.edu).

## STATE 4-H HORTICULTURE JUDGING CONTEST

The Kansas 4-H Horticulture Judging Contest is on August 16, on the K-State Manhattan campus. For more information and study materials go to [The Kansas 4-H event website](#). If you plan to participate, reach out to Cassie Thiessen, Post Rock District's Horticulture Extension Agent, for support. Call 785-738-3597 or email her at [cathiessen@ksu.edu](mailto:cathiessen@ksu.edu).

## FFA PARTICIPATION AT POST ROCK DISTRICT COUNTY FAIRS IN 4-H DIVISION

Post Rock District supports FFA member participation in the 4-H division of the county fair. The Kansas 4-H Policy relating to Dual Enrollment of 4-H and FFA members will be followed. All 4-H participation deadlines will apply to FFA Chapters and members, including but not limited to tagging and verification expectations, weigh-ins, project drop/add deadline, fair entry deadlines and fees, dress code, code of conduct, etc.



To meet the Post Rock District's project enrollment drop/add deadline, FFA members need to identify what project areas they will be participating in by May 1, 2025. They will also share important contact information to assist the Post Rock District with providing communication to and supporting the youth in their participation. The earlier FFA members sign up, the more they can be included in communication about upcoming weigh-ins, deadlines, etc. Sign up by completing the online form at <https://bit.ly/FFAParticipationIn4HDivisionAtCountyFair>.

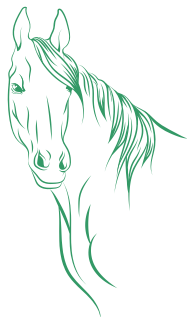
Are you currently enrolled in Post Rock District 4-H, but also want to exhibit FFA at the same county fair? You do not need to fill out this online form. You can select all of your 4-H AND FFA project areas in 4-H Online. Then, when you submit your entries by your county's pre-fair/other entry deadlines you will clarify which project areas are to be in 4-H and which ones are to be in FFA. The form is a way to gather information from youth *only* representing FFA at the county fair.



# THE GREEN LINK DISTRICT & STATE NEWS

 [POSTROCK.KSU.EDU](https://POSTROCK.KSU.EDU)  [POSTROCK4H@KSU.EDU](mailto:POSTROCK4H@KSU.EDU)  
POST ROCK DISTRICT 4-H NEWSLETTER

## HORSE PROJECT REMINDERS



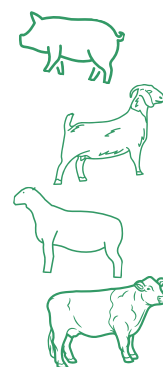
**Horse project members are strongly encouraged to get your horse coggins testing completed soon.** This will prevent you from having any issues with participation at 4-H and non-4-H events during the spring and summer. Kansas Division of Animal Health has revised regulations and it is now the responsibility of the horse owner to have a negative Coggins test. A negative Coggins test is valid for 12 months. It is up to the participant to provide verification if event organizers require proof of a negative Coggins test! Read the full regulation on the [Kansas Division of Animal Health website](#).

**Planning to show at the State 4-H Horse Show?** There are important deadlines that must be met to be eligible for the State 4-H Horse Show. Kim Naber, 4-H Program Coordinator, is an excellent resource for the equine project and she is happy to explain the requirements and deadlines. She can be reached at 785-346-2521 or [kimn@ksu.edu](mailto:kimn@ksu.edu). It's best to reach out to Kim or your local Extension Office before May 1, so you can be on track to meet all requirements.

## LIVESTOCK PROJECT: SPRING SHOWS, EVENTS, AND MORE

If you are seeking opportunities related to livestock projects - like spring shows and other contests - the KSU Youth Livestock Program website provides a listing of many opportunities. It certainly doesn't contain every learning and competition opportunity, yet it is a great reference point as you plan for spring and summer. Visit <https://www.asi.k-state.edu/extension/youth-programs/events/>.

The North Central Kansas Livestock Circuit is not affiliated to K-State Research and Extension or Kansas 4-H, but it provides many showing opportunities in our region. Follow their Facebook page for information: <https://www.facebook.com/groups/ncklc>.



## COUNTY FAIR LIVESTOCK WEIGH-IN

Rate-of-gain contests are managed differently in each county and it is an optional experience. Any livestock not weighed-in and tagged with the county's official 4-H tag (or the state Kansas 4-H EID tag) at the designated event are not eligible for the county fair's 4-H rate-of-gain contest. The determination of what livestock are eligible for rate-of-gain is the decision of the county body which manages the experience in the respective county (4-H Council or Fair Board). Watch your county's 4-H Newsletter page for information about weigh-in and verification events! If you are enrolled in a livestock project, it is HIGHLY RECOMMENDED to bring your animal to these events because attending can assure you are understanding of and ready to meet all exhibition requirements (so you won't be disqualified at fair); you can connect with other adults and youth in the project for support, encouragement, and assistance throughout the year; and you can get many of your questions answered.

## FAIR PREMIUM AUCTIONS AND PROJECT SALES

County Fair Premium Auctions and Project Sales are NOT governed or clerked by Post Rock Extension District nor the local county's 4-H Council. We are also not the fiscal agent for the event. The premium auction or project sale is operated differently in each county. You can contact your local extension office to learn about the event in your county so you can be prepared to meet all requirements, if you want to participate. We are happy to share the expectations and rules set by the group that governs your respective event.

# THE GREEN LINK DISTRICT & STATE NEWS

📶 [POSTROCK.KSU.EDU](http://POSTROCK.KSU.EDU) ✉️ [POSTROCK4H@KSU.EDU](mailto:POSTROCK4H@KSU.EDU)  
POST ROCK DISTRICT 4-H NEWSLETTER

## STATE FAIR ANIMALS

Exhibiting an animal beyond the 4-H division at a Post Rock District county fair means that ownership and identification must meet the requirements outlined by the specific show's governing body. The 4-H member is responsible for understanding the deadlines and expectations involved. If your animal species doesn't classify for state livestock nomination, visit the [Kansas 4-H State Fairbook](#) for important ownership, verification, and exhibition deadlines and details. Contact your local Extension Office as soon as possible if you are considering showing at the Kansas State Fair, so we can share resources to help you navigate the process

## STATE LIVESTOCK NOMINATIONS

All market animals and commercial females youth would like to be eligible for the Kansas State Fair Grand Drive and/or Kansas Junior Livestock Show (KJLS) must be nominated. The [Kansas Youth Livestock Program](#) website outlines the [State Livestock Nomination Process](#) under the "Nomination Information" tab. Families are highly encouraged to use the resources available, especially the *Rookie Guide*.

The nomination process is through an online system. Families will purchase DNA envelopes in advance, submit their animal and exhibitor information online, then mail their completed and signed DNA samples by the deadline. Extension Agents and FFA Advisors will approve nominations online. Post Rock District will NOT sell Kansas 4-H EID tags over-the-counter at our Extension Offices. The state requires our staff to approve all State Nominations for livestock, and part of that approval process is confirming that we have physically seen each Kansas 4-H EID tag in your livestock animal's ear at tagging time (i.e. county weigh-in event).

Exhibitors who nominated animals in past years need to use their existing ShoWorks account. Those who need help accessing their account may request a password reset through ShoWorks or contact the [Kansas Youth Livestock Program](#) for assistance. Returning exhibitors should not create a new account. The ShoWorks website is <https://kansasnom.fairwire.com/>.

### Grand Drive and KJLS Important Dates:

- April 20: Last Day to Order Beef DNA Envelopes
- May 1: Market Beef Nominations Due & DNA Postmarked
- June 5: Last Day to Order Small Livestock DNA Envelopes
- June 15: Small Livestock Nominations Due & DNA Postmarked
  - Market Swine, Commercial Gilt
  - Market Lamb, Commercial Ewe
  - ALL Meat Goat (Market & Breeding)
- June 15: Commercial Heifer Nominations Due
- June 15: Registered Breeding Heifer Papers in Exhibitor's Name
- June 15: Registered Breeding Gilt Papers in Exhibitor's Name
- July 1: Registered Breeding Ewe Papers in Exhibitor's Name
- July 15: Kansas State Fair Grand Drive Entry Deadline
- July 25: Kansas State Fair Grand Drive Late Entry Deadline
- August 15: KJLS Entry Deadline
- August 31: KJLS Late Entry Deadline
- September 5 - 7: Kansas State Fair Grand Drive
- October 3-5: Kansas Junior Livestock Show



**KANSAS  
YOUTH LIVESTOCK  
PROGRAM  
WEBSITE**

# THE GREEN LINK DISTRICT & STATE NEWS

 [POSTROCK.KSU.EDU](http://POSTROCK.KSU.EDU)  [POSTROCK4H@KSU.EDU](mailto:POSTROCK4H@KSU.EDU)  
POST ROCK DISTRICT 4-H NEWSLETTER

## FUNDRAISERS AND AWARD SOLICITATION FOR 4-H NEED TO NOTIFY THE EXTENSION OFFICE IN ADVANCE

Communicate with your local Extension Office in the early planning stages of your fundraiser to make sure you meet all Kansas 4-H policies and best practices relating to raising money in the name of 4-H. We have a form that helps share the necessary information. Complete the form and submit it to your local Extension Office or email to [postrock4h@ksu.edu](mailto:postrock4h@ksu.edu) BEFORE beginning your fundraiser. Do not promote or implement your fundraiser until you receive approval from Post Rock District. Allow at least 10 business days for the fundraiser to be reviewed. If the fundraiser needs to be revised, the individual listed on the form is the one who will be contacted. Find the form at [www.postrock.k-state.edu/4-h/club-and-council-support/finances-and-fundraising/](http://www.postrock.k-state.edu/4-h/club-and-council-support/finances-and-fundraising/).



## 4-H BRANDING REQUIRED ON CLOTHING, AWARDS, AND SWAG

The use of the K-State Research and Extension/Kansas 4-H co-wordmark is required on all 4-H print, digital, apparel, and merchandise. This requirement applies to all designs created at the local, county, district, area, and state levels. BEFORE ordering any items to ensure your club, council, fair board, etc. are using licensed vendors and that all designs include the required co-wordmark. We have a form to help with approval. Submit the form & design artwork (in full color) to your local Extension Office or by email to [postrock4h@ksu.edu](mailto:postrock4h@ksu.edu). Allow at least 10 business days for the design to be reviewed. If edits need to be made, the individual listed on the form is the one who will be contacted. Find the form at [www.postrock.k-state.edu/4-h/club-and-council-support/branding-and-marketing/](http://www.postrock.k-state.edu/4-h/club-and-council-support/branding-and-marketing/).



## SUMMER JOBS

**INTERNSHIP (2)** : The Youth Development Intern is responsible for assisting with the planning and implementation of the Post Rock District 4-H Youth Development Program. An area of focus for this internship is planning and implementing interactive education and enrichment experiences for school-age youth audiences in Jewell, Lincoln, Mitchell, Osborne, and Smith Counties. Learn more online at [Post Rock District Career Opportunities website](#).

**4-H PROGRAM ASSISTANT, MITCHELL COUNTY:** The 4-H Program Assistant is responsible for assisting with the planning and implementation of the Post Rock District 4-H Youth Development Program. An area of focus for this position will be the Mitchell County Fair's 4-H events and activities. Learn more online at [Post Rock District Career Opportunities website](#).

## SUMMER DAY CAMPS AND WORKSHOPS IN POST ROCK DISTRICT

Post Rock District is excited to offer many youth experiences during the summer break. We'll feature the opportunities in our May Newsletter and through emails sent to your 4-H Online contact. You can also stay up-to-date with opportunities by following Post Rock District 4-H on Facebook!

K-State Research and Extension is committed to providing equal opportunity for participation in all programs, services and activities. Program information may be available in languages other than English. Reasonable accommodations for persons with disabilities, including alternative means for communication (e.g., Braille, large print, audio tape, and American Sign Language) may be requested by contacting the event contact four weeks prior to the start of the event. Post Rock District staff and office contact information is available at [www.postrock.ksu](http://www.postrock.ksu). Requests received after this date will be honored when it is feasible to do so. Language access services, such as interpretation or translation of vital information will be provided free of charge to limited English proficient individuals upon request.  
**Kansas State University Agricultural Experiment Station and Cooperative Extension Service**  
K-State Research and Extension is an equal opportunity provider and employer.