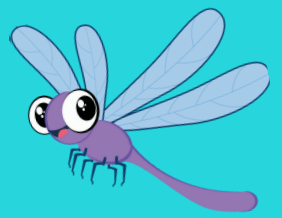


# IMAGINARIUM DAY CAMP



Imaginarium Day Camp will inspire youth to let imaginations thrive through a variety of exciting, hands-on activities that are sure to bring out creativity this summer! Participants will explore art, photography, nature, and leadership throughout the energizing day camp experience.

**For: Youth entering grades 1-6 in the fall**  
**ALL youth are welcome!**

**Participation Fee: \$5**

Fee is non-refundable and payable to Post Rock District by cash or check.

Snacks provided.

Dress for the weather and being active.

**Registration Due: June 3**

Space is limited!

**Register Online:** Scan QR Code or visit  
[bit.ly/24ImaginariumDayCamp](https://bit.ly/24ImaginariumDayCamp)

**Tuesday, June 11**

**Glen Elder, KS**

Glen Elder City Library  
120 S. Market Street

**2 Sessions - Same Camp!**

Choose One Session

**#1: 8:00 a.m. - NOON**

**#2: 1:00 - 5:00 p.m.**

✉ [postrock4h@ksu.edu](mailto:postrock4h@ksu.edu)

📞 785-738-3597



Register today! ↗

**K-STATE**  
Research and Extension



Post Rock  
District

[postrock.ksu.edu](https://postrock.ksu.edu)



K-State Research and Extension is committed to providing equal opportunity for participation in all programs, services and activities. Program information may be available in languages other than English. Reasonable accommodations for persons with disabilities, including alternative means for communication (e.g., Braille, large print, audio tape, and American Sign Language) may be requested by contacting the event contact (Post Rock Extension District) four weeks prior to the start of the event at (785-738-3597 or [postrock4h@ksu.edu](mailto:postrock4h@ksu.edu)). Requests received after this date will be honored when it is feasible to do so. Language access services, such as interpretation or translation of vital information will be provided free of charge to limited English proficient individuals upon request.

**Kansas State University Agricultural Experiment Station and Cooperative Extension Service**

K-State Research and Extension is an equal opportunity provider and employer.